



## Pro-Pak Ltd. Cromer, Norfolk (UK)

Branches in Johannesburg, South Africa, and Mission Viejo, California, USA  
Suppliers of Heavy Equipment, Spares and Accessories Worldwide.

Extensive range of Equipment and Machines available

Email:- [admin@propakmachines.eu](mailto:admin@propakmachines.eu)

[www.propakmachines.eu](http://www.propakmachines.eu)

### Quarry / Demolition / Pile Driving / Compaction Attachments



Item	Unit	V150	V200	V300	V400
Excavator class	ton	11-16	18-26	27-33	33-40
Ripper weight	kg	1500	2200	2700	4000
Frequency	bpm	2000-2500	2000-2500	2000-2500	2000-2500
Dimension (LxWxH)	mm	2000 x 1024 x 607	2328 x 1200 x 710	2833 x 1463 x 867	3150 x 1625 x 963
Hydraulic oil flow	lpm	80-140	130-180	170-200	200-260
Hydraulic working pressure	bar	150-200	180-200	200-250	200-250
Hydraulic return pressure	bar	6	6	6	6
Case drain maximum pressure	bar	4	4	4	4
Accumulator pressure	bar	6	6	6	6

#### Vibratory Ripper

Item	Unit	C200	C300	C400
Excavator class	ton	20-28	28-36	36-47
Shears weight	kg	1920	2980	4450
Overall length	mm	2130	2765	3150
Max. opening width (Jaw)	mm	495	572	695
Cutting force (Max)	ton	320	500	730
Cutting force (Mid)	ton	150	210	295
Cutting force (End)	ton	85	105	215
Oil flow rate	lpm	150-250	180-270	280-360



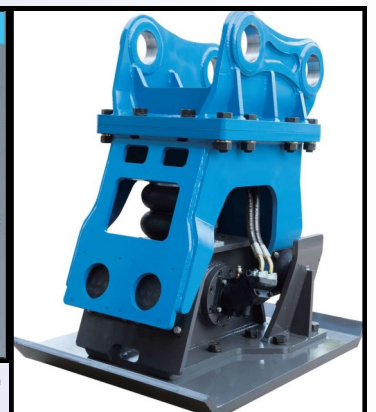
#### Demolition Shears



Item	Unit	W250	W300	W400
Excavator class	ton	20-28	28-34	33-40
Hammer weight	kg	1600	1800	1900
Extension boom weight	kg	600	700	700
Clamping jaw	mm	65	65	65
Frequency	bpm	2000-2500	2000-2500	2000-2500
Slewing degree	degree	360	360	360
Dimension (LxWxH)	mm	1857 x 1042 x 650	1959 x 1103 x 792	2016 x 1196 x 830
Hydraulic oil flow	lpm	130-180	170-200	200-260
Hydraulic working pressure	bar	180-200	200-250	200-250

#### Vibro Hammer Driver

Item	Unit	D50	D80	D150	D200	D300
Excavator class	ton	4-6	6-10	11-17	17-26	26-40
Compactor weight	kg	240	420	720	1050	1200
Vibration power	ton	3.0	4.0	6.5	11.5	18.0
Frequency	bpm	2000	2000	2000	2000	2000
Bottom size	mm	300 x 800	650 x 900	750 x 1000	850 x 1200	1000 x 1305
Hydraulic oil flow	lpm	45-65	50-80	80-120	110-170	160-230
Hydraulic working pressure	bar	100-150	100-150	100-150	100-150	100-150



[Email](#) or [Contact](#) us now!

#### Plate Compactor